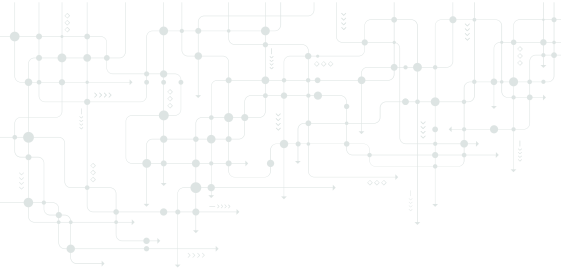


# AI Myths You Can't Afford to Believe

*A clear-eyed guide for SMB leaders facing real pressure*

Myth	Reality
"AI will replace our team and cut payroll."	It might highlight inefficiencies, but without structure, AI adds confusion. Smart teams get more out of their people with AI, not instead of them.
"We need to adopt quickly before we fall behind."	Blind adoption leads to messes you can't afford to clean up. Sustainable advantage comes from structured, strategic use, not rushed experiments.
"We'll save time automatically."	Automation without process clarity just creates faster mistakes. You still need workflows, oversight, and human checkpoints.
"Once we plug it in, we're done."	AI needs follow-through. No governance, no training, no updates? Expect poor results and team resistance.
"AI isn't ethical."	It isn't by default, but it can be. Leadership, design, and oversight determine the ethics.
"AI isn't relevant to what we do."	If you use email, documents, data, or scheduling, AI is already relevant. The question isn't if, it's how you manage it.
"This is an IT issue."	It's an operations issue. Without leadership direction and usage boundaries, it turns into a legal and reputation risk fast.



# Why These Myths Are Risky for SMBs

*These myths don't just slow innovation, they risk real harm.*

AI might feel like a shortcut, but without structure, it exposes every flaw in your operations.

In SMBs, you don't have layers of middle management to absorb mistakes. If AI leads to overpromising, customer missteps, or internal problems, the fallout hits fast. Leaders are being told to "move faster", but speed without alignment creates risk.

That's why I built the AI-Ready Reality Check: a structured, strategic way to identify what's working, what's risky, and how to scale AI responsibly.

It's not about saying no to AI. It's about doing it right so your team, your clients, and your operations stay protected.

**Start here: [Click for Resources](#)**

Free heatmap + tools + resources