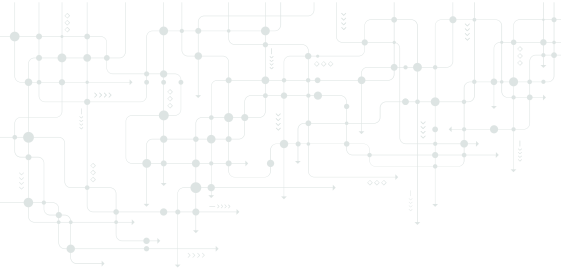


AI Myths Nonprofits Can't Afford to Believe

A grounded guide for mission-driven leaders

Myth	Reality
"AI will replace our team."	Poor systems, not AI, are the real threat to your people. Responsible AI enhances—not replaces—mission-critical roles.
"AI is too complicated for nonprofits."	Complexity comes from poor implementation. With the right guardrails, AI can simplify not overwhelm.
"We'll fall behind if we don't adopt it immediately."	Rushing without structure creates more problems. Strategic pacing protects your people and your mission.
"Once we set it up, we're done."	AI is not a plug-and-play fix. It requires governance, updates, and leadership accountability.
"AI isn't ethical."	It isn't by default, but it can be. Leadership, design, and oversight determine the ethics.
"Humans won't matter as much."	AI without human discernment leads to harm. Judgment, equity, and mission focus must remain human-led.
"AI is a passing trend."	The hype may fade, but automation and AI tools are now part of the operating environment. They're not going away.



Why These Myths Matter

These myths don't just slow innovation, they risk real harm.

When nonprofits delay or rush into AI without a clear plan, the cost isn't just technical. Staff burnout. Programs lose focus. Communities feel it.

What gets lost isn't efficiency; it's equity, trust, and long-term sustainability.

That's why I built the AI-Ready Reality Check: a free diagnostic that shows what's working, where there's risk, and how to move forward responsibly.

Don't let the myths lead. Get grounded and move with intention.

Start here: [Click for Resources](#)

Free heatmap + tools + resources